

# BON TERRA

## Developing Québec's NEXT GOLD CAMP

### Exploration and Resource Expansion in the URBAN-BARRY CAMP

**Bonterra Resources Inc. (BTR-TSXV)** is an exploration, development Company, NE of Val-d'Or, Quebec, a very favourable mining jurisdiction. BTR has 3 flagship properties, Gladiator & Barry in the Urban Barry Camp and Moroy in the Bachelor Camp.

In addition, BTR controls over 38,000 hectares with discovery potential. BTR has the Bachelor Mill, fully permitted at 800tpd. BTR is commencing an ambitious summer program to increase and upgrade the NI 43-101 Resources Estimate.

### Investment Highlights

- ▶ **QUÉBEC** – Operating in the 20<sup>th</sup> best mining district in the world
- ▶ **DISTRICT PLAY**- 8.5M ounces discovered to date
- ▶ **IN-SITU RESOURCE**  
Metal value of \$4 Billion
- ▶ **RESOURCE** – 2.1Mil oz NI 43-101 Res. Est.
- ▶ **DRILLING** – 8 Drills, 3 properties
- ▶ **BACHELOR MILL**–  
Permitted 800 ton per day
- ▶ **LAND** – 3 Flagship Exploration Properties
- ▶ **Bulk Sample at Moroy**  
expected in Q4/2020
- ▶ **Resource Upgrade** -  
expected in Q2/2021

### NI 43-101 Mineral Resource Estimate - May 28, 2019

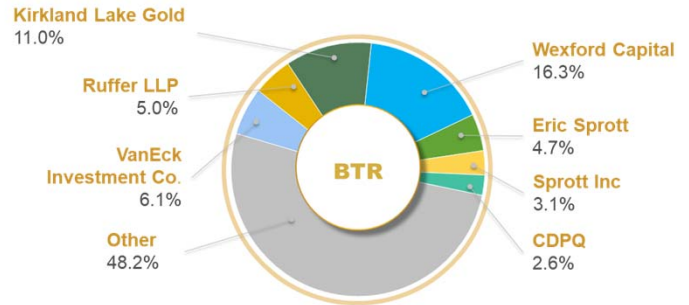
DEPOSIT	MEASURED			INDICATED			INFERRED		
	Tonnes	Au (g/t)	Ounces Au	Tonnes	Au (g/t)	Ounces Au	Tonnes	Au (g/t)	Ounces Au
Gladiator	-	-	-	743,000	8.46	202,000	3,065,000	9.10	897,000
Barry	-	-	-	2,052,000	5.84	385,000	2,740,000	5.14	453,000
Moroy	302,000	5.66	55,000	365,000	4.77	56,000	396,000	4.32	55,000
<b>Total</b>	<b>302,005</b>	<b>5.66</b>	<b>55,000</b>	<b>3,160,000</b>	<b>6.33</b>	<b>643,000</b>	<b>6,201,000</b>	<b>7.04</b>	<b>1,405,000</b>

Mineral resources are reported at a cut-off grade of 3.5 g/t Au for Gladiator and Barry, and 3.0 for Moroy. Cut-off grades are based on a gold price of US\$1,300 per ounce, a foreign exchange rate of US\$0.75, gold recoveries of 93% - 95%, and reasonable mining, processing and transportation costs. See notes to NI 43-101 at [www.sedar.com](http://www.sedar.com).

## Capital Structure

TSX-V **BTR** | OTCQX **BONXF** | FSE **9BR2**

Issued & Outstanding Shares	77.5M
Options	4.8M
Warrants	5.6M
Fully Diluted	87.9M
Market Capitalization	C\$100.0M
Cash	C\$6.0M
Total Debt	C\$1.0M



(1) As of September 18, 2020

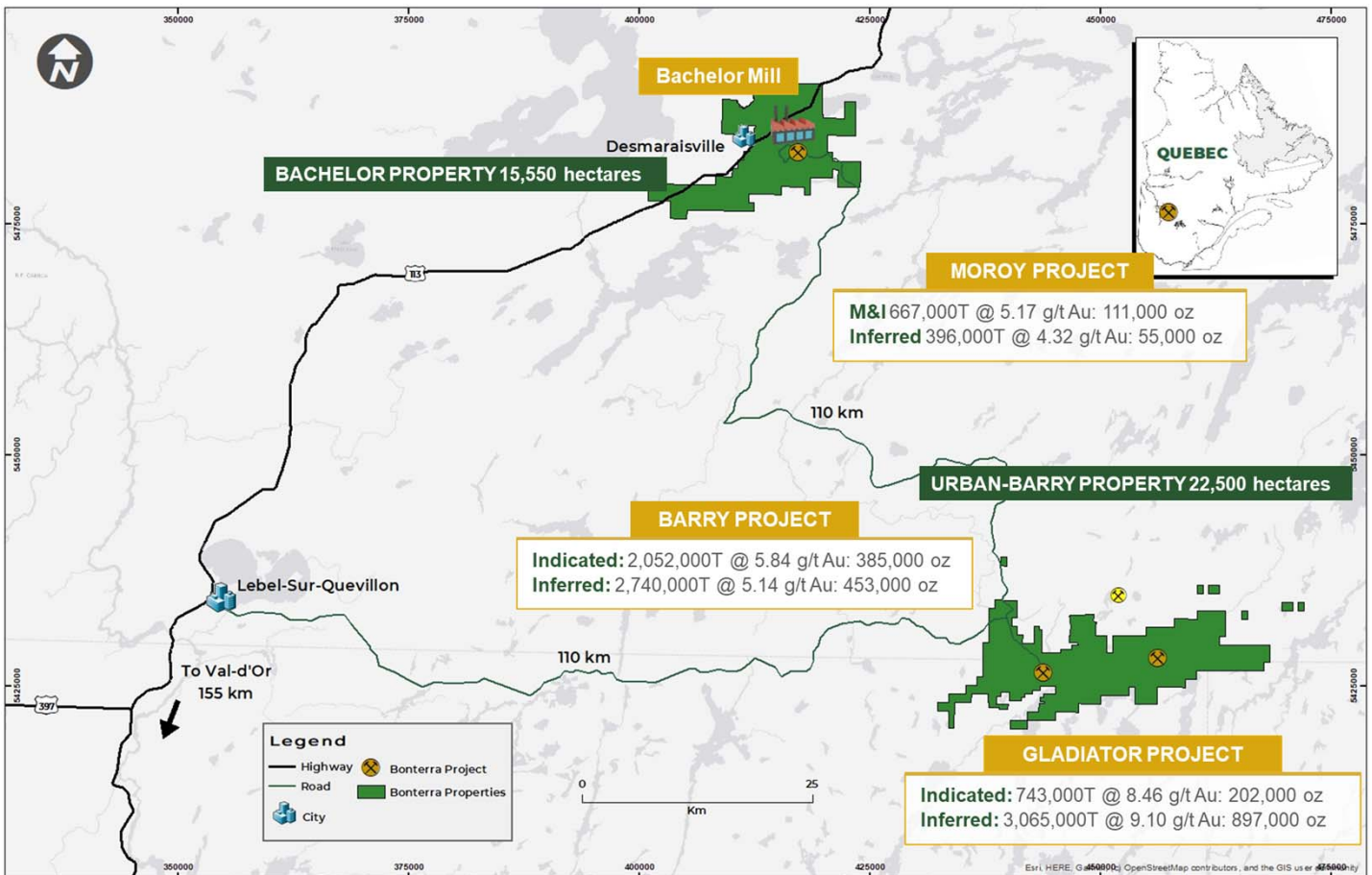
### Analyst Coverage

Sprott Capital	Brock Salier
PI Financial Corp	Philip Ker

### Market Data

	TSX-V C\$
Closing price	C\$1.28
52-week range	C\$0.75– C\$2.58
30D Average Daily Traded Volume	254,475 Shs

## Bonterra Assets | Land Position



# BONTERRA

[www.btrgold.com](http://www.btrgold.com)

### MANAGEMENT

Pascal Hamelin  
Interim CEO

Johnny Oliveira  
CFO

Marc Ducharme  
Principal Geologist

### CONTACT

T 819.825.8678 Ext 1236  
ir@btrgold.com